

DATA SHEET A20H (1 of 3)
RECTANGULAR ATTENUATOR
MODULAR CONSTRUCTION - "Z" SUFFIX
ASSEMBLY DETAILS

THIS IS NOT A STAND ALONE DOCUMENT AND UNLESS REFERRED TO IN A DATED EQUIPMENT SCHEDULE IS SUBJECT TO REVISION WITHOUT NOTICE.

NOTE

THE EXAMPLE SHOWN BELOW IS FOR ILLUSTRATION PURPOSES ONLY AND ATTENUATORS MAY BE SUPPLIED IN ANY COMBINATION OF SECTIONS ON LENGTH, WIDTH OR HEIGHT. ALWAYS REFER TO THE "Z" CODE GIVEN IN THE SUFFIX COLUMN OF THE EQUIPMENT SCHEDULE. DATA SHEET A09 REFERS.

DIMENSIONS GIVEN ON THE EQUIPMENT SCHEDULE ARE THE OVERALL ATTENUATOR BODY LENGTH (L), WIDTH (W) AND HEIGHT (H) AND EXCLUDE FLANGES.

MANUFACTURING AND ASSEMBLY DIMENSIONAL TOLERANCE < 1.0%

ASSEMBLY AND INSTALLATION BY OTHERS.

ATTENUATORS MUST BE ASSEMBLED IN SITU AND ADEQUATELY SUPPORTED.

ASSEMBLY

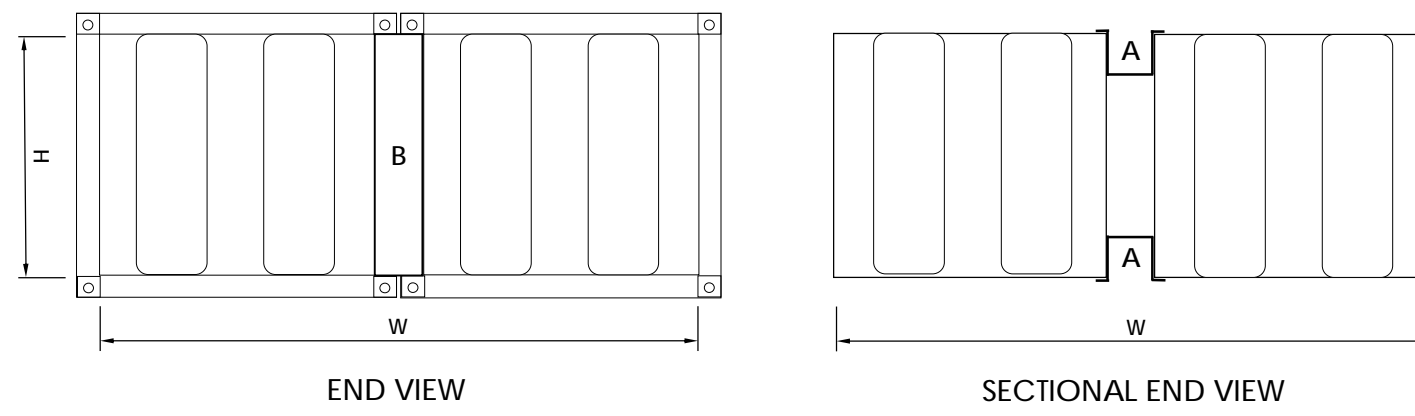
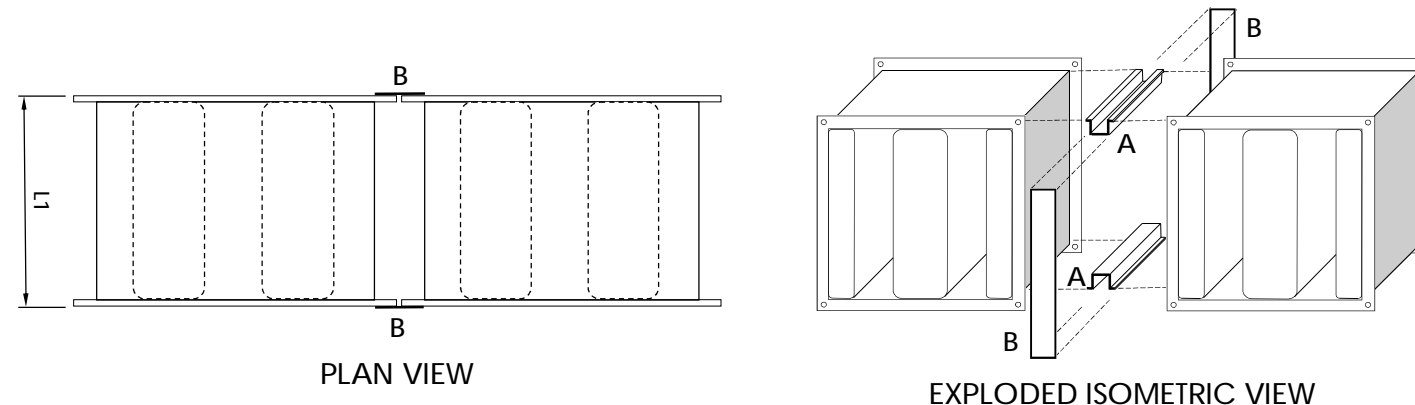
PRE-DRILLED TOP HAT SECTIONS (A) ARE PROVIDED TO CORRECTLY SPACE ADJACENT MODULES. THESE ARE SUPPLIED CUT TO LENGTH. FIX TO THE MODULE BODY WITH THE SELF-DRILLING SCREWS SUPPLIED.

WIDER MODULES HAVE INTERMEDIATE TOP HAT SECTIONS (A*) TO SUPPORT THE MODULES ABOVE.

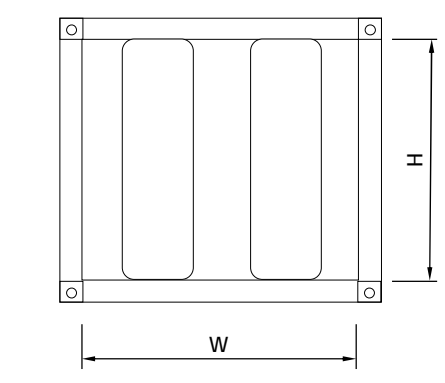
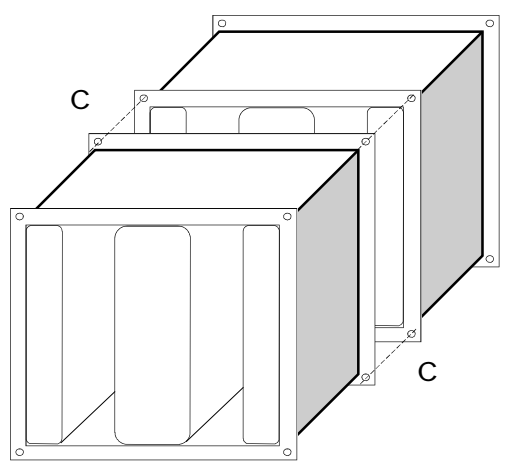
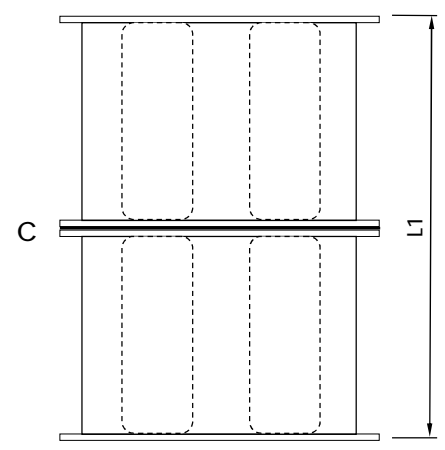
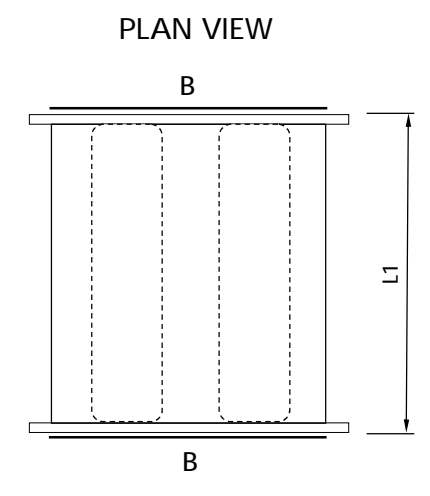
PRE-DRILLED FLAT PLATES (B) ARE PROVIDED TO CLOSE THE FLANGE JOINTS. THESE ARE SUPPLIED IN STANDARD LENGTHS AND MUST BE CUT ON SITE BY INSTALLER. FIX TO THE FLANGE FACE AT BOTH ENDS OF THE ATTENUATOR WITH THE SELF-DRILLING SCREWS SUPPLIED. THE JOINT MUST BE MADE AIR-TIGHT (SEALANT BY INSTALLER).

FLANGES (C) ARE TO BE BOLTED AND SEALED (FIXINGS AND SEALANT BY INSTALLER).

WHEN THERE ARE ADDITIONAL MODULES TO THOSE SHOWN, SIMPLY REPEAT ASSEMBLY SEQUENCE.

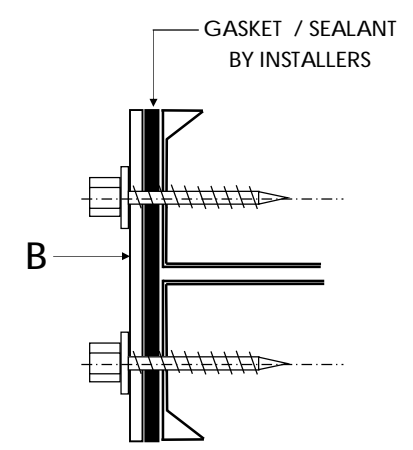


MODULAR ATTENUATOR SPLIT IN SECTIONS ON WIDTH

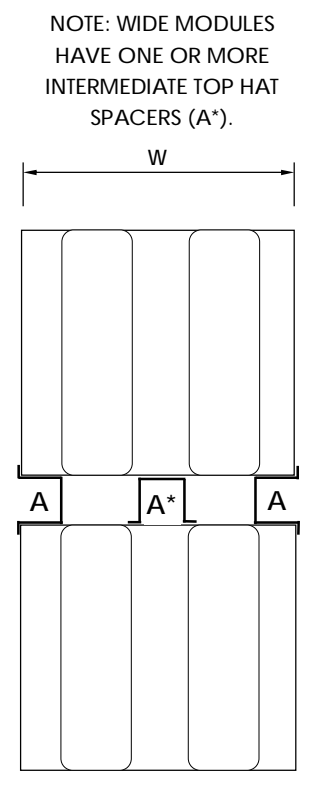
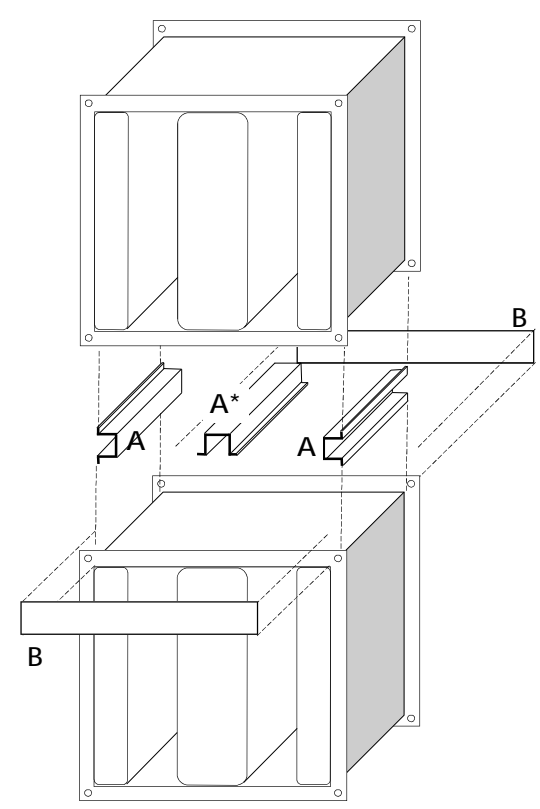


EXPLODED ISOMETRIC VIEW

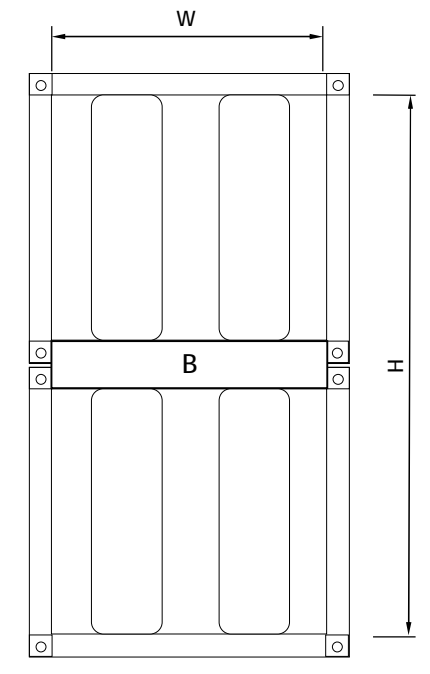
MODULAR ATTENUATOR SPLIT IN SECTIONS ON LENGTH



SECTION THROUGH FLANGE CLOSING PLATE (B)
 INSTALLERS MUST ENSURE AIRTIGHT SEAL BETWEEN PLATE AND FLANGES



SECTIONAL END VIEW



END VIEW

MODULAR ATTENUATOR SPLIT IN SECTIONS ON HEIGHT

NOTE: WIDE MODULES HAVE ONE OR MORE INTERMEDIATE TOP HAT SPACERS (A*).

DATA SHEET A20H (2 of 3)
 RECTANGULAR ATTENUATOR
 MODULAR CONSTRUCTION - "Z" SUFFIX
 SPLIT ON WIDTH AND HEIGHT
 ASSEMBLY DETAILS

THIS IS NOT A STAND ALONE DOCUMENT AND UNLESS REFERRED TO IN A DATED EQUIPMENT SCHEDULE IS SUBJECT TO REVISION WITHOUT NOTICE.



NOTE

THE EXAMPLE SHOWN BELOW IS FOR ILLUSTRATION PURPOSES ONLY AND ATTENUATORS MAY BE SUPPLIED IN ANY COMBINATION OF SECTIONS ON LENGTH, WIDTH OR HEIGHT. ALWAYS REFER TO THE "Z" CODE GIVEN IN THE SUFFIX COLUMN OF THE EQUIPMENT SCHEDULE. DATA SHEET A09 REFERS.

DIMENSIONS GIVEN ON THE EQUIPMENT SCHEDULE ARE THE OVERALL ATTENUATOR BODY LENGTH (L), WIDTH (W) AND HEIGHT (H) AND EXCLUDE FLANGES.

MANUFACTURING AND ASSEMBLY DIMENSIONAL TOLERANCE < 1.0%

ASSEMBLY AND INSTALLATION BY OTHERS.

ATTENUATORS MUST BE ASSEMBLED IN SITU AND ADEQUATELY SUPPORTED.

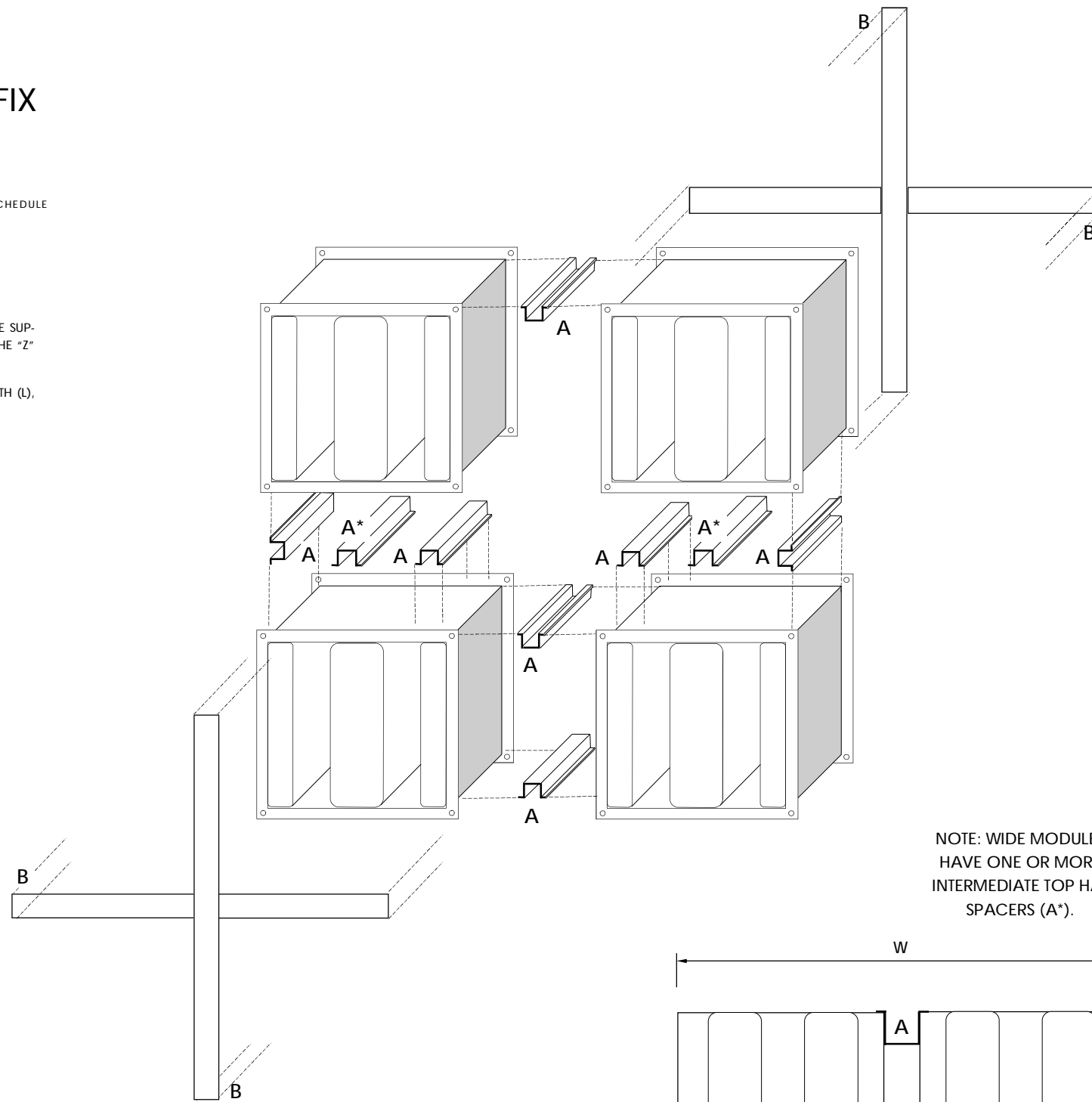
ASSEMBLY

PRE-DRILLED TOP HAT SECTIONS (A) ARE PROVIDED TO CORRECTLY SPACE ADJACENT MODULES. THESE ARE SUPPLIED CUT TO LENGTH. FIX TO THE MODULE BODY WITH THE SELF-DRILLING SCREWS SUPPLIED.

WIDER MODULES HAVE INTERMEDIATE TOP HAT SECTIONS (A*) TO SUPPORT THE MODULES ABOVE.

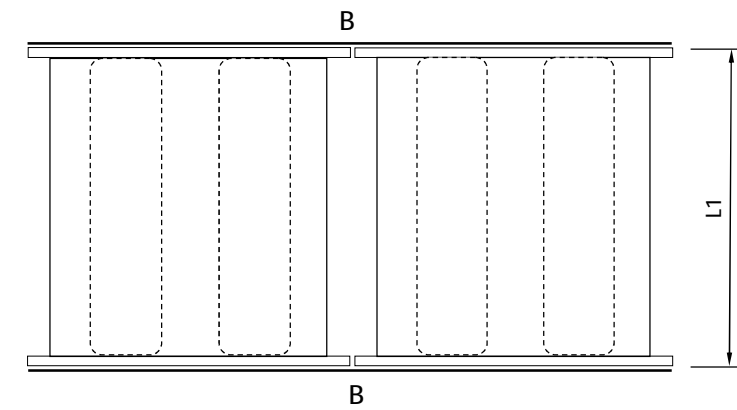
PRE-DRILLED FLAT PLATES (B) ARE PROVIDED TO CLOSE THE FLANGE JOINTS. THESE ARE SUPPLIED IN STANDARD LENGTHS AND MUST BE CUT ON SITE BY INSTALLER. FIX TO THE FLANGE FACE AT BOTH ENDS OF THE ATTENUATOR WITH THE SELF-DRILLING SCREWS SUPPLIED. THE JOINT MUST BE MADE AIR-TIGHT (SEALANT BY INSTALLER).

WHEN THERE ARE ADDITIONAL MODULES TO THOSE SHOWN. SIMPLY REPEAT ASSEMBLY SEQUENCE.

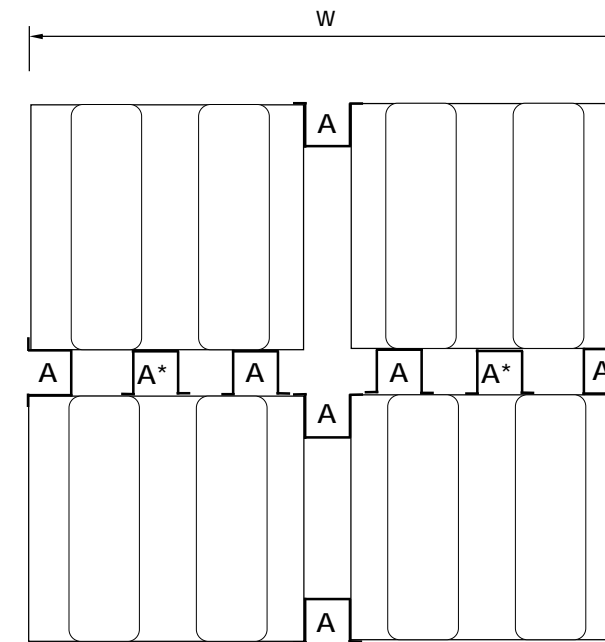


EXPLODED ISOMETRIC VIEW

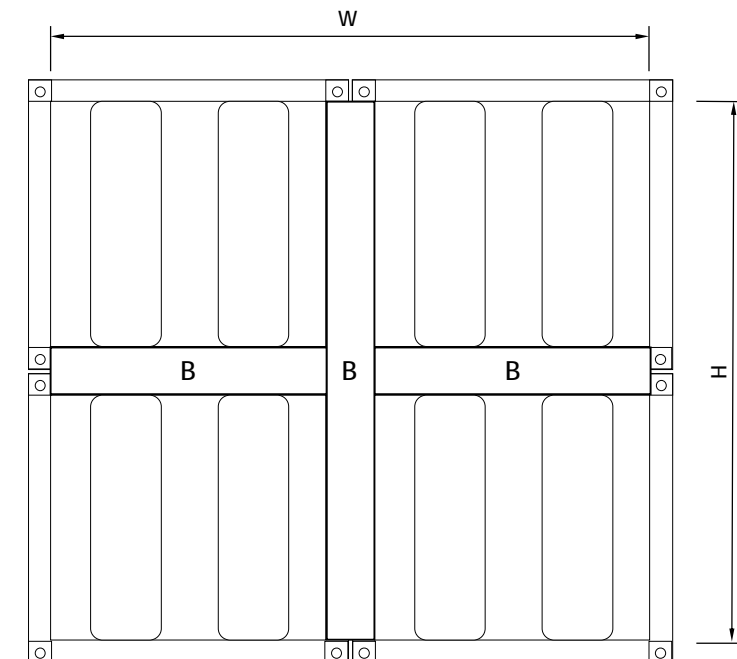
NOTE: WIDE MODULES HAVE ONE OR MORE INTERMEDIATE TOP HAT SPACERS (A*).



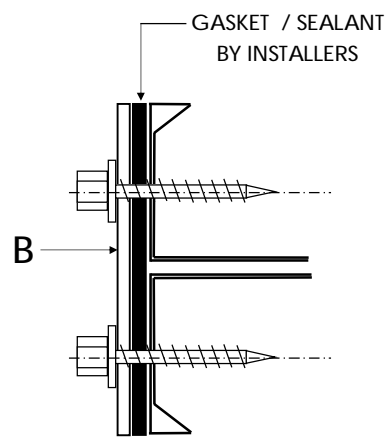
PLAN VIEW



SECTIONAL END VIEW



END VIEW



SECTION THROUGH FLANGE CLOSING PLATE (B)

INSTALLERS MUST ENSURE AIRTIGHT SEAL BETWEEN PLATE AND FLANGES

DATA SHEET A20H (3 of 3)
RECTANGULAR ATTENUATOR
MODULAR CONSTRUCTION - "Z" SUFFIX
SPLIT ON LENGTH, WIDTH AND HEIGHT
ASSEMBLY DETAILS

THIS IS NOT A STAND ALONE DOCUMENT AND UNLESS REFERRED TO IN A DATED EQUIPMENT SCHEDULE IS SUBJECT TO REVISION WITHOUT NOTICE.

NOTE

THE EXAMPLE SHOWN BELOW IS FOR ILLUSTRATION PURPOSES ONLY AND ATTENUATORS MAY BE SUPPLIED IN ANY COMBINATION OF SECTIONS ON LENGTH, WIDTH OR HEIGHT. ALWAYS REFER TO THE "Z" CODE GIVEN IN THE SUFFIX COLUMN OF THE EQUIPMENT SCHEDULE. DATA SHEET A09 REFERS.

DIMENSIONS GIVEN ON THE EQUIPMENT SCHEDULE ARE THE OVERALL ATTENUATOR BODY LENGTH (L), WIDTH (W) AND HEIGHT (H) AND EXCLUDE FLANGES.

MANUFACTURING AND ASSEMBLY DIMENSIONAL TOLERANCE < 1.0%

ASSEMBLY AND INSTALLATION BY OTHERS.

ATTENUATORS MUST BE ASSEMBLED IN SITU AND ADEQUATELY SUPPORTED.

ASSEMBLY

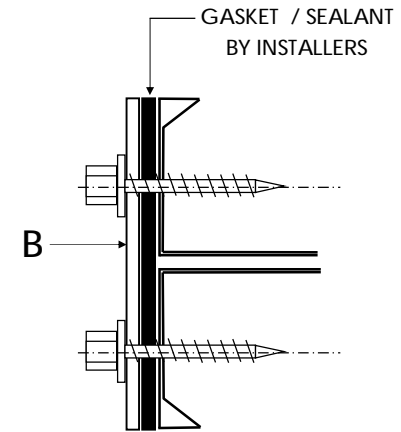
PRE-DRILLED TOP HAT SECTIONS (A) ARE PROVIDED TO CORRECTLY SPACE ADJACENT MODULES. THESE ARE SUPPLIED CUT TO LENGTH. FIX TO THE MODULE BODY WITH THE SELF-DRILLING SCREWS SUPPLIED. WIDER MODULES HAVE INTERMEDIATE TOP HAT SECTIONS (A*) TO SUPPORT THE MODULES ABOVE.

PRE-DRILLED FLAT PLATES (B) ARE PROVIDED TO CLOSE THE FLANGE JOINTS. THESE ARE SUPPLIED IN STANDARD LENGTHS AND MUST BE CUT ON SITE BY INSTALLER. FIX TO THE FLANGE FACE AT BOTH ENDS OF THE ATTENUATOR WITH THE SELF-DRILLING SCREWS SUPPLIED. THE JOINT MUST BE MADE AIR-TIGHT (SEALANT BY INSTALLER).

FLANGES (C) ARE TO BE BOLTED AND SEALED (FIXINGS AND SEALANT BY INSTALLER).

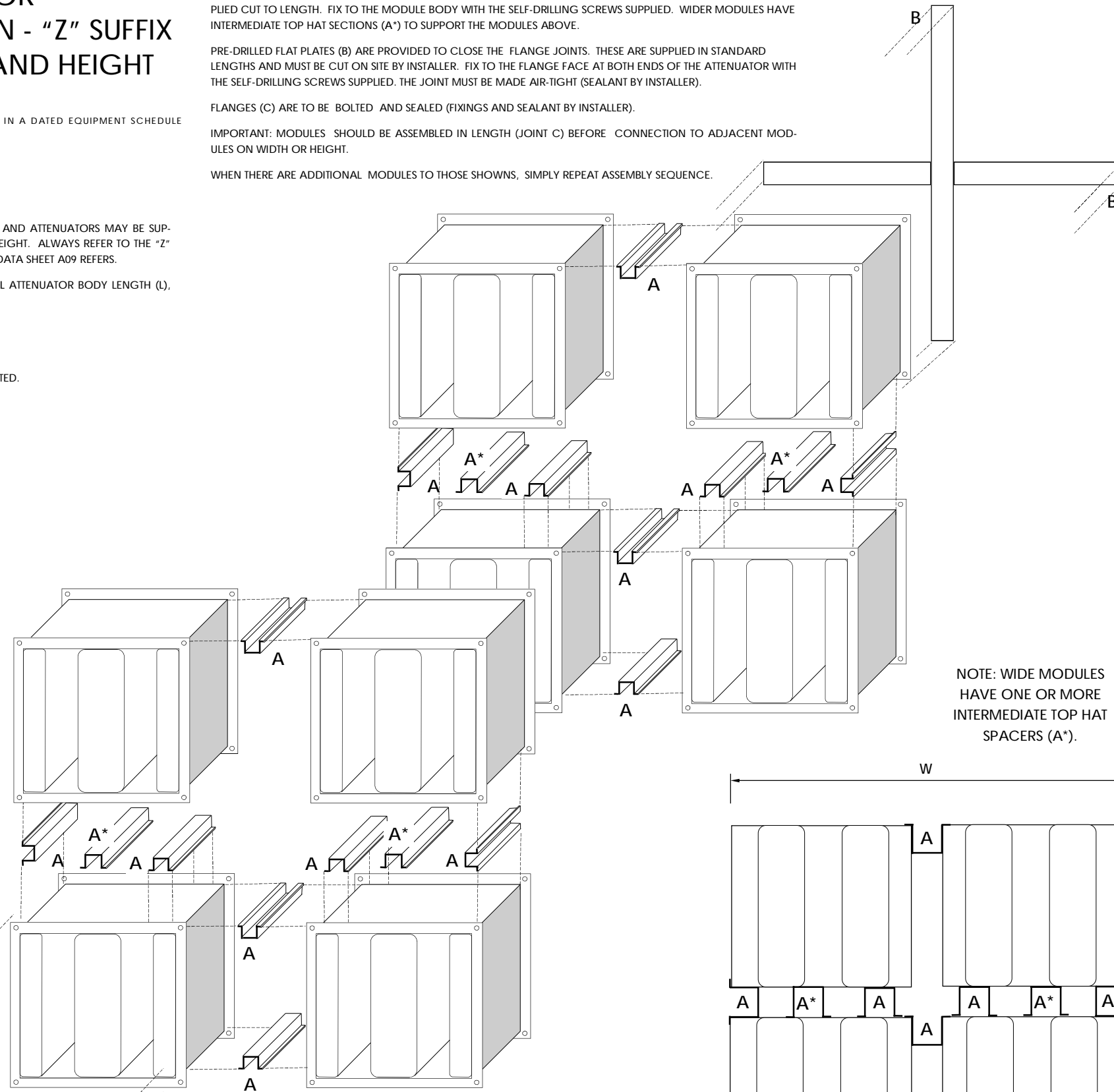
IMPORTANT: MODULES SHOULD BE ASSEMBLED IN LENGTH (JOINT C) BEFORE CONNECTION TO ADJACENT MODULES ON WIDTH OR HEIGHT.

WHEN THERE ARE ADDITIONAL MODULES TO THOSE SHOWN, SIMPLY REPEAT ASSEMBLY SEQUENCE.

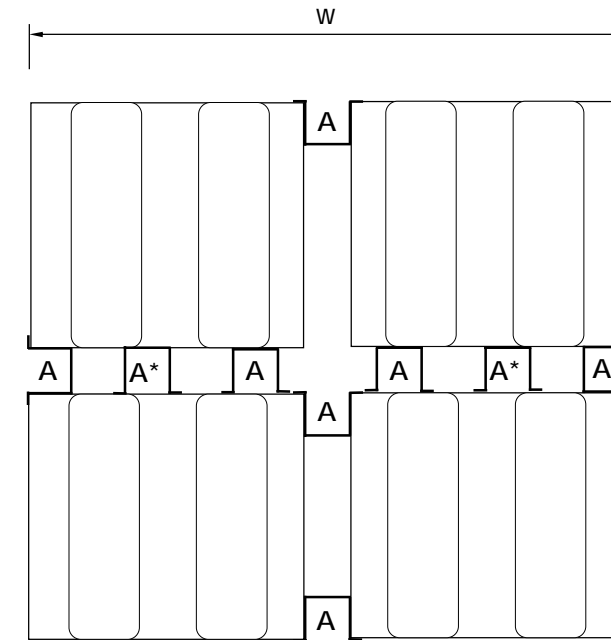


SECTION THROUGH FLANGE CLOSING PLATE (B)

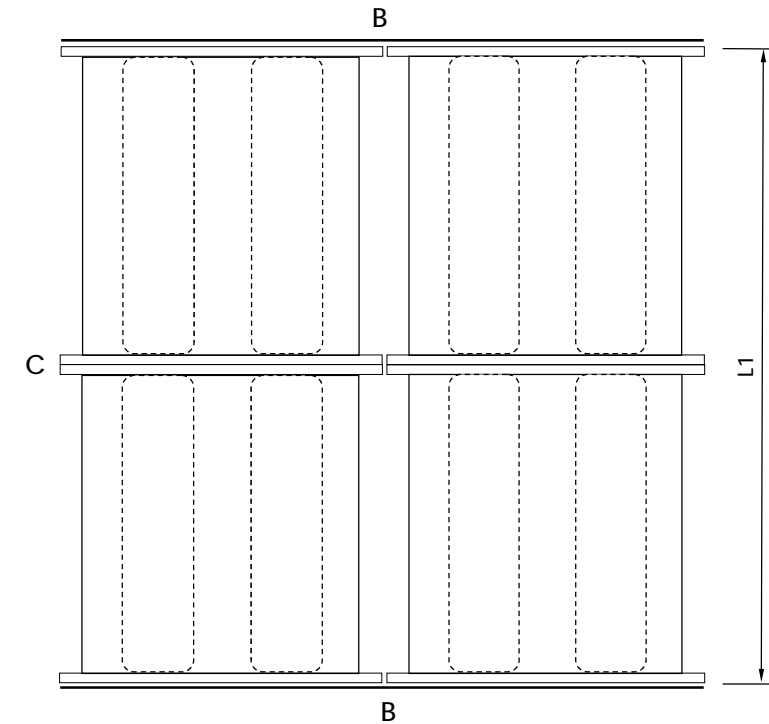
INSTALLERS MUST ENSURE AIRTIGHT SEAL BETWEEN PLATE AND FLANGES



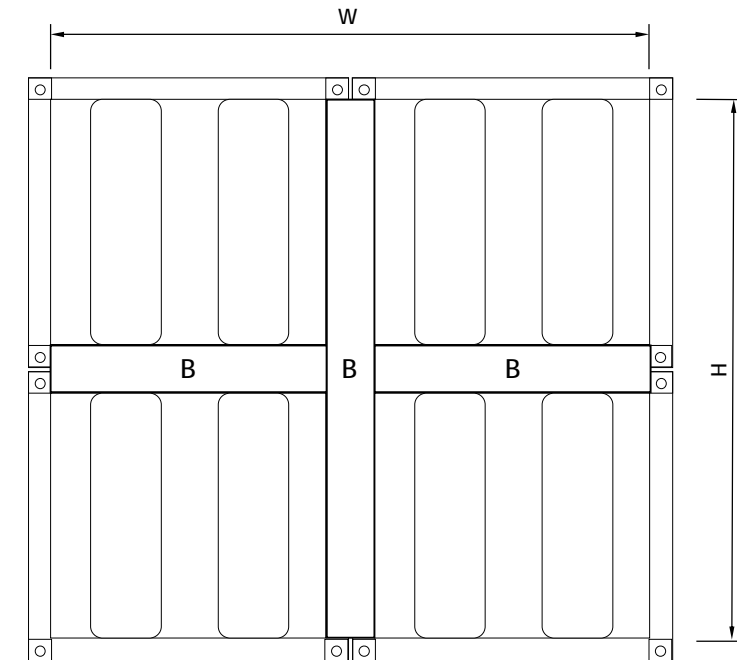
EXPLODED ISOMETRIC VIEW



SECTIONAL END VIEW



PLAN VIEW



END VIEW

NOTE: WIDE MODULES HAVE ONE OR MORE INTERMEDIATE TOP HAT SPACERS (A*).