

DATA SHEET V750F

INERTIA BASE

INSTALLATION INSTRUCTIONS

THIS IS NOT A STAND ALONE DOCUMENT AND UNLESS REFERRED TO IN A CERTIFIED EQUIPMENT SCHEDULE IS SUBJECT TO REVISION WITHOUT NOTICE.



PIPES, DUCTS AND CONDUITS MUST BE SUPPORTED INDEPENDENTLY AND MUST NOT BE INSTALLED UNTIL THE INERTIA BASE IS SET UP AT THE CORRECT HEIGHT AND IS FLOATING.

THE SPRING MOUNTINGS MUST BE INSTALLED UPRIGHT, WITH A MINIMUM OF ONE FIXING PER MOUNTING.

FLOOR PAN MUST BE FULLY SUPPORTED UNTIL THE CONCRETE HAS SET AND THE SPRING MOUNTINGS ADJUSTED.

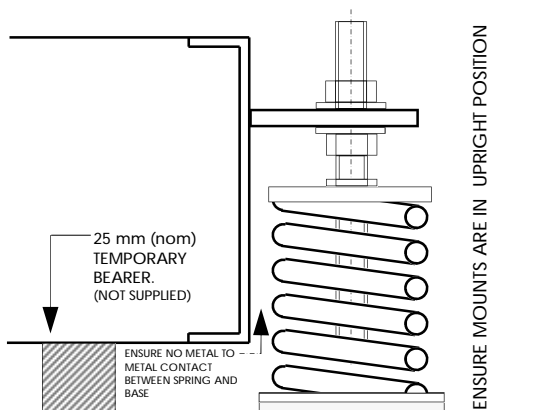
MOUNTINGS MUST BE ADJUSTED A SMALL AMOUNT IN TURN. ADJUSTING ONE AT A TIME MAY RESULT IN OVERLOAD AND PERMANENT DAMAGE TO THE SPRING. ENSURE WHEN INSTALLING SERVICES THAT NO ADDITIONAL LOAD IS TRANSFERRED TO BASE.

FREING OIL (WD40) MAY BE USED TO LUBRICATE THE ADJUSTING NUT.

ENSURE THAT THERE IS NO METAL TO METAL CONTACT BETWEEN SPRING AND BASE.

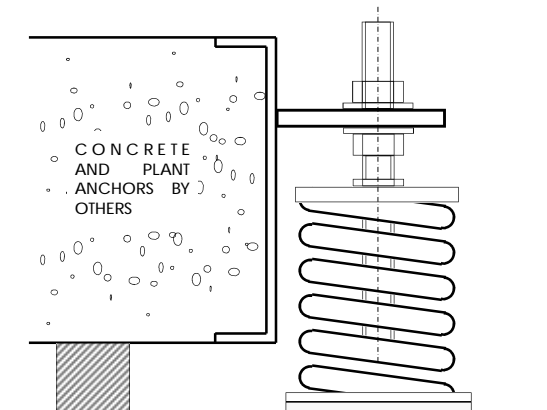
STEP 1

ASSEMBLE INERTIA BASE AND LOCATE FULL WIDTH TEMPORARY BEARERS TO SUPPORT THE FLOOR PAN.



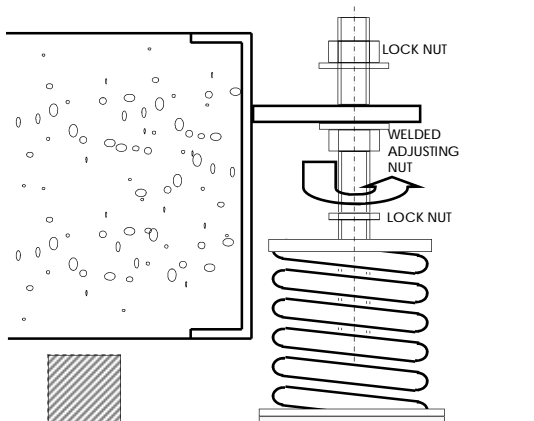
STEP 2

POUR CONCRETE AND INSTALL MACHINE.



STEP 3

LOOSEN LOCK NUTS AND TRANSFER LOAD TO MOUNTS BY TURNING WELDED ADJUSTING NUT ANTI-CLOCKWISE UNTIL BASE LIFTS CLEAR OF TEMPORARY BEARERS AND IS LEVEL.



STEP 4

TIGHTEN LOCK NUTS AND REMOVE TEMPORARY SUPPORTS. (HEIGHT MAY BE FURTHER ADJUSTED BY RAISING OR LOWERING THE ADJUSTING STUD BEFORE LOCKING.)

