

DATA SHEET V330F SPRING HANGER H30 RANGE



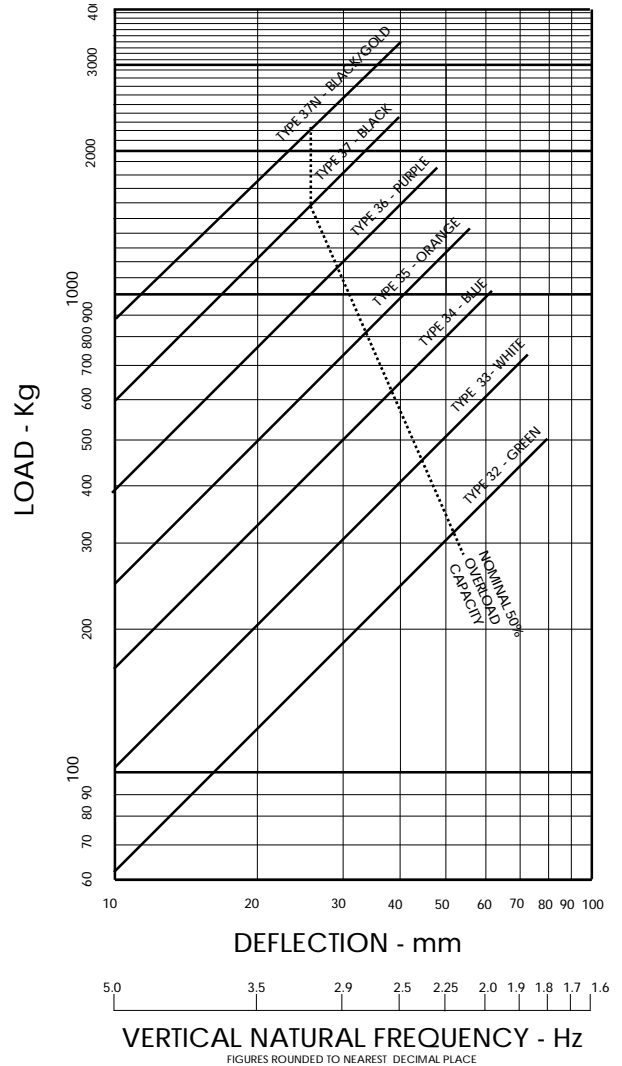
THIS IS NOT A STAND ALONE DOCUMENT AND UNLESS REFERRED TO IN A CERTIFIED EQUIPMENT SCHEDULE IS SUBJECT TO REVISION WITHOUT NOTICE.

CAPACITY

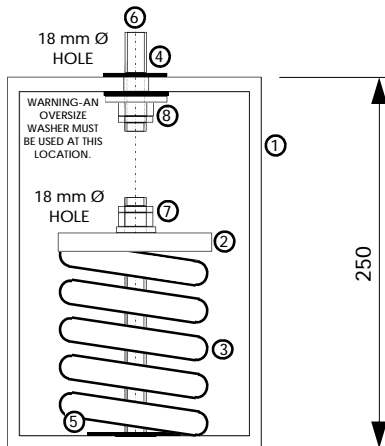
TYPE	COLOUR CODE	LOAD * Kg	DEFLECTION * mm
32	GREEN	503	79
33	WHITE	743	73
34	BLUE	1002	62
35	ORANGE	1420	54
36	PURPLE	1865	47
37	BLACK	2356	40
37N	BLACK/GOLD	3440	40

*IMPORTANT : VALUES SHOWN ARE MAXIMUM WITH SPRING IN SOLID CONDITION. RECOMMENDED OVERLOAD CAPACITY IS 50%.

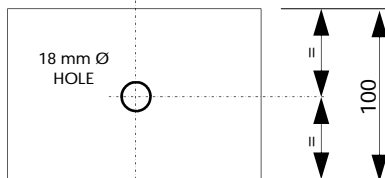
LOAD/DEFLECTION GRAPH



DIMENSIONS



ELEVATION



PLAN

COMPONENTS

1. HEAVY GAUGE, FULLY WELDED STEEL BOX SECTION BODY.
2. TOP PRESSURE PLATE.
3. COLOUR CODED HIGH DEFLECTION STEEL SPRING (TYPE N HAS NESTED SPRING).
4. DROP ROD HOLE WITH HIGH FREQUENCY ISOLATION GROMMET.
5. CLEARANCE HOLE WITH PERIPHERAL SNUBBING FOR HIGH FREQUENCY ISOLATION.
6. DROP RODS, ADJUSTING NUTS, LOCK NUTS AND WASHERS (BY OTHERS)
7. ADJUSTING NUT. INSTALLERS TO LUBRICATE WITH FREEING OIL (WD40).
8. WARNING-AN OVERSIZE WASHER MUST BE USED AT THIS LOCATION.

FINISH

- PASSIVATED ZINC TO METAL COMPONENTS.
- POLYESTER COATING TO SPRING (COLOUR CODED).
- SUITABLE FOR USE IN NON-CORROSIVE EXTERNAL APPLICATIONS.

NOTES

- THIS DATA SHEET IS TO BE READ IN CONJUNCTION WITH THE EQUIPMENT SCHEDULE.
- DROP RODS, NUTS, LOCKING NUTS AND WASHERS TO BE SUPPLIED AND FITTED BY OTHERS.
- SUITABLE FOR USE IN NON-CORROSIVE EXTERNAL APPLICATIONS.

SUFFIX

- H(-) - OPEN SPRING HANGER (MODEL REFERENCE GIVEN ON EQUIPMENT SCHEDULE).
- SP - SPECIAL CONSTRUCTION. SEE EQUIPMENT SCHEDULE FOR DETAILS.