

DATA SHEET V300F SPRING HANGER H1 RANGE



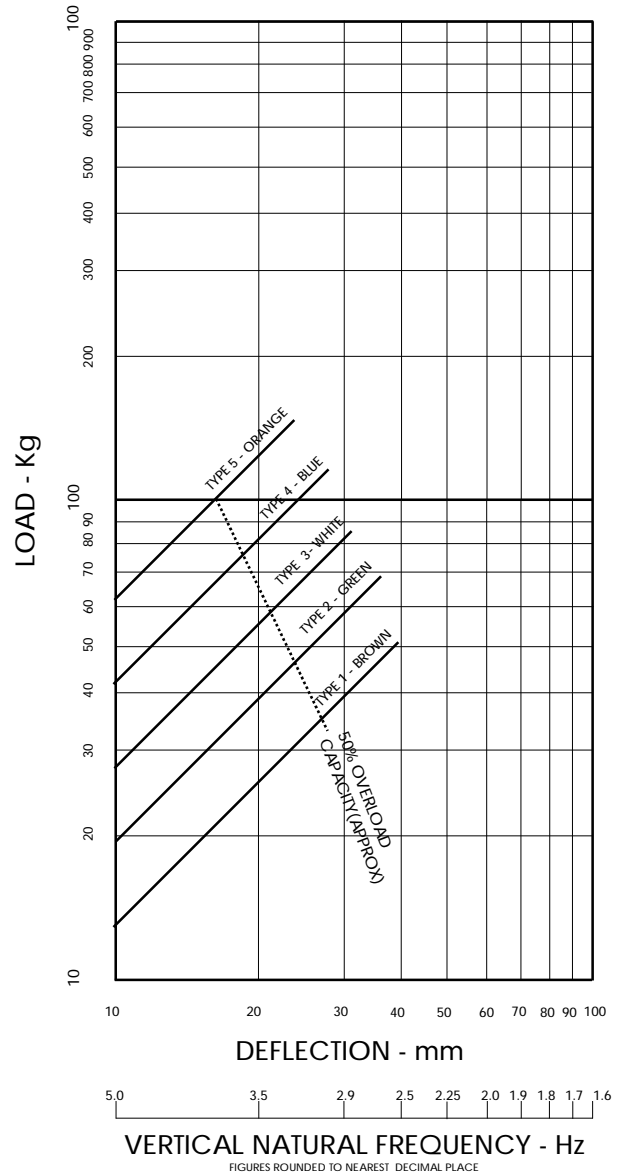
THIS IS NOT A STAND ALONE DOCUMENT AND UNLESS REFERRED TO IN A CERTIFIED EQUIPMENT SCHEDULE IS SUBJECT TO REVISION WITHOUT NOTICE.

CAPACITY

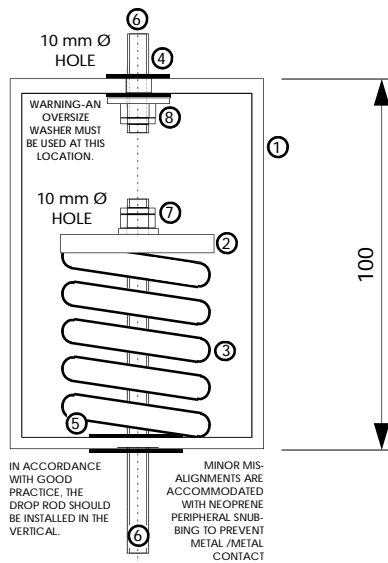
| TYPE | COLOUR CODE | LOAD * Kg | DEFLECTION * mm |
|------|-------------|--------------|--------------------|
| 1 | BROWN | 52 | 39 |
| 2 | GREEN | 69 | 36 |
| 3 | WHITE | 86 | 32 |
| 4 | BLUE | 119 | 28 |
| 5 | ORANGE | 150 | 24 |

*IMPORTANT : VALUES SHOWN ARE MAXIMUM WITH SPRING IN SOLID CONDITION.
RECOMMENDED OVERLOAD CAPACITY IS 50%.

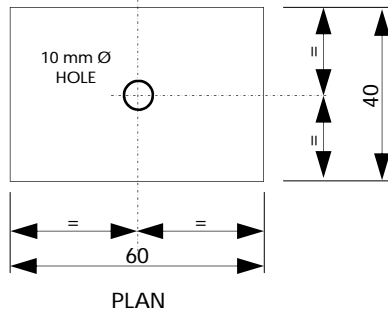
LOAD/DEFLECTION GRAPH



DIMENSIONS



ELEVATION



COMPONENTS

1. HEAVY GAUGE, FULLY WELDED STEEL BOX SECTION BODY.
2. TOP PRESSURE PLATE.
3. COLOUR CODED HIGH DEFLECTION STEEL SPRING (TYPE N HAS NESTED SPRING).
4. DROP ROD HOLE WITH HIGH FREQUENCY ISOLATION GROMMET.
5. CLEARANCE HOLE WITH PERIPHERAL SNUBBING FOR HIGH FREQUENCY ISOLATION.
6. DROP RODS, ADJUSTING NUTS, LOCK NUTS AND WASHERS (BY OTHERS)
7. ADJUSTING NUT. INSTALLERS TO LUBRICATE WITH FREEING OIL (WD40)
8. WARNING-AN OVERSIZE WASHER MUST BE USED AT THIS LOCATION.

FINISH

PASSIVATED ZINC TO METAL COMPONENTS.

POLYESTER COATING TO SPRING (COLOUR CODED).

SUITABLE FOR USE IN NON-CORROSIVE EXTERNAL APPLICATIONS.

NOTES

THIS DATA SHEET IS TO BE READ IN CONJUNCTION WITH THE EQUIPMENT SCHEDULE.

DROP RODS, NUTS, LOCKING NUTS AND WASHERS TO BE SUPPLIED AND FITTED BY OTHERS.

SUITABLE FOR USE IN NON-CORROSIVE EXTERNAL APPLICATIONS.

SUFFIX

H(-) - OPEN SPRING HANGER (MODEL REFERENCE GIVEN ON EQUIPMENT SCHEDULE).

SP - SPECIAL CONSTRUCTION. SEE EQUIPMENT SCHEDULE FOR DETAILS.