

DATA SHEET A20G RECTANGULAR ATTENUATOR MODULAR CONSTRUCTION "Z" SUFFIX - ASSEMBLY DETAILS



THIS IS NOT A STAND ALONE DOCUMENT AND UNLESS REFERRED TO IN A DATED EQUIPMENT SCHEDULE IS SUBJECT TO REVISION WITHOUT NOTICE.

EXAMPLES SHOWN BELOW ARE FOR ILLUSTRATION PURPOSES ONLY AND ATTENUATORS MAY BE SUPPLIED IN ANY COMBINATION OF SECTIONS ON LENGTH, WIDTH OR HEIGHT. ALWAYS REFER TO THE "Z" CODE GIVEN IN THE SUFFIX COLUMN OF THE EQUIPMENT SCHEDULE.

DIMENSIONS GIVEN ON THE EQUIPMENT SCHEDULE ARE THE OVERALL ATTENUATOR BODY LENGTH (L), WIDTH (W) AND HEIGHT (H)

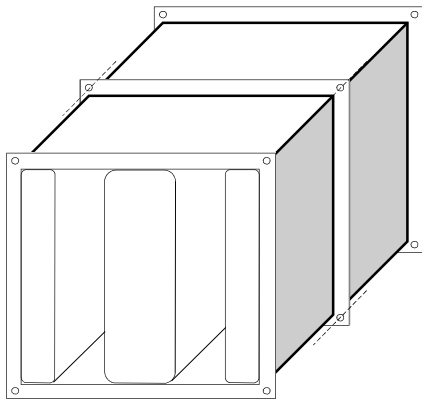
MANUFACTURING AND ASSEMBLY DIMENSIONAL TOLERANCE < 1.0%

WORKS FITTED BRACKETS ARE PROVIDED TO CORRECTLY SPACE ADJACENT MODULES.

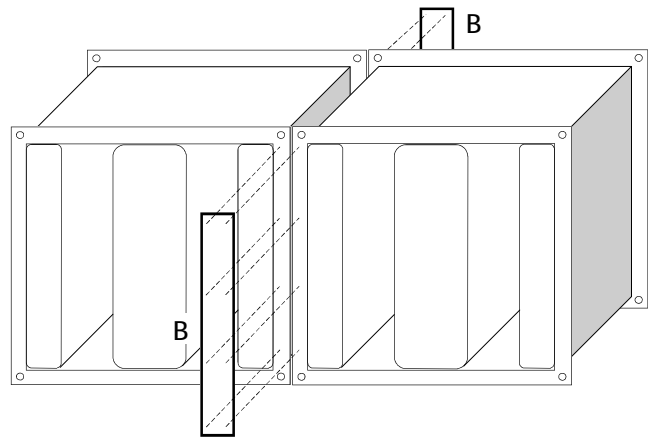
FIXINGS ARE PROVIDED TO ASSEMBLE ATTENUATOR. FIXINGS TO CONNECTING DUCT BY OTHERS.

ASSEMBLY AND INSTALLATION BY OTHERS.

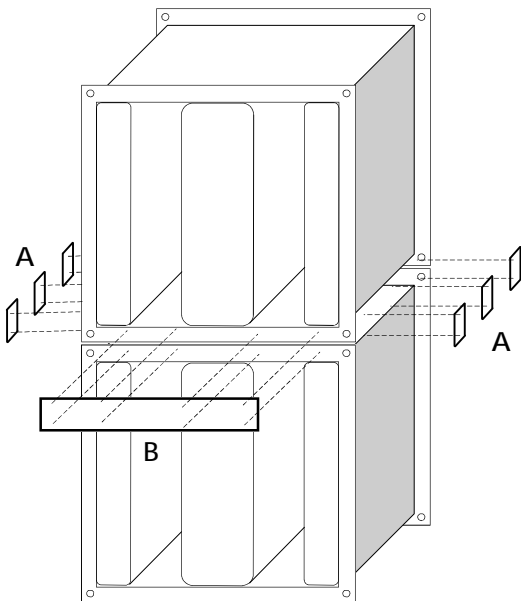
ATTENUATORS MUST BE ASSEMBLED IN SITU AND ADQEQUATELY SUPPORTED.



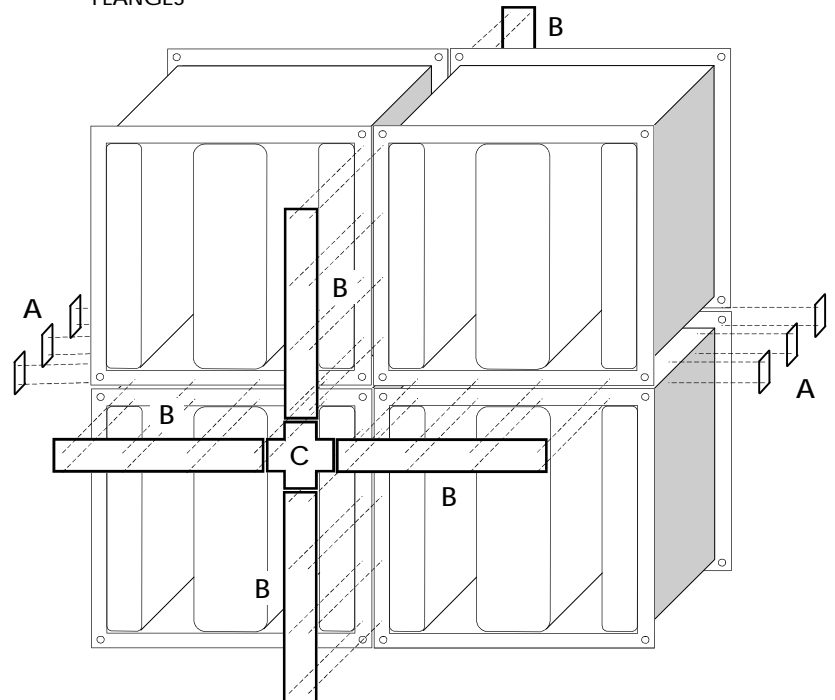
ATTENUATOR SPLIT ON LENGTH - MODULES CONNECTED BY BOLTING / CLAMPING FLANGES TOGETHER



ATTENUATOR SPLIT ON WIDTH - MODULES CONNECTED BY SCREWING THROUGH PRE-DRILLED PLATES B INTO FACE OF FLANGES



ATTENUATOR SPLIT ON HEIGHT - MODULES CONNECTED BY SCREWING THROUGH PRE-DRILLED PLATES A AND B



ATTENUATOR SPLIT ON WIDTH AND HEIGHT - MODULES CONNECTED BY SCREWING THROUGH PRE-DRILLED PLATES A, B, AND C