

DATA SHEET V530F

SPRING HANGER

HPL30 RANGE

PRE-LOADED

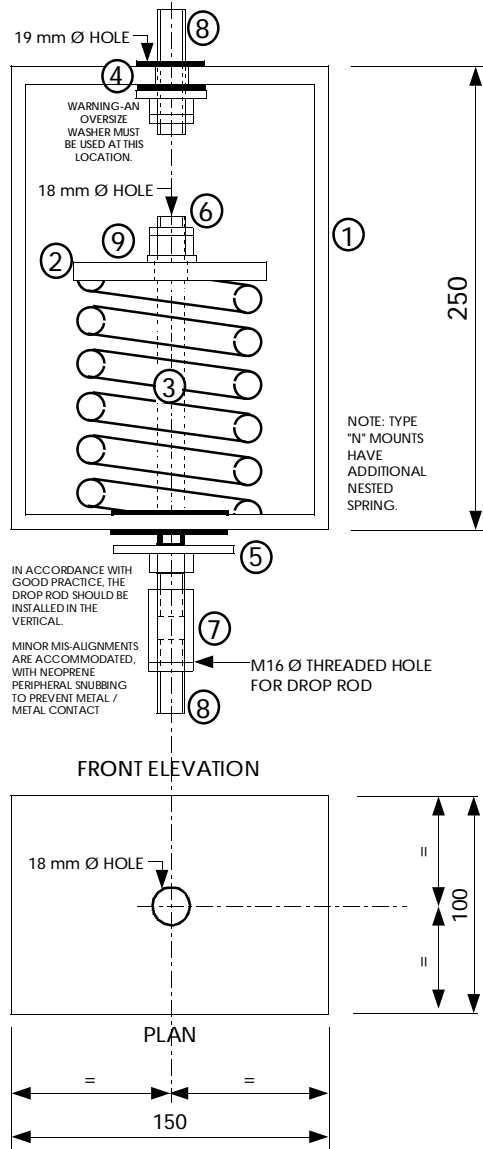
THIS IS NOT A STAND ALONE DOCUMENT AND UNLESS REFERRED TO IN A CERTIFIED EQUIPMENT SCHEDULE IS SUBJECT TO REVISION WITHOUT NOTICE.

CAPACITY

TYPE	COLOUR CODE	LOAD * Kg	DEFLECTION * mm
32	GREEN	503	79
33	WHITE	743	73
34	BLUE	1002	62
35	ORANGE	1420	54
36	PURPLE	1865	47
37	BLACK	2356	40
37N	BLACK/GOLD	3440	40

*IMPORTANT : VALUES SHOWN ARE MAXIMUM WITH SPRING IN SOLID CONDITION. RECOMMENDED OVERLOAD CAPACITY IS 50%.

DIMENSIONS



COMPONENTS

1. HEAVY GAUGE, FULLY WELDED STEEL BOX SECTION BODY.
2. TOP PRESSURE PLATE.
3. COLOUR CODED HIGH DEFLECTION STEEL SPRING.
4. DROP ROD HOLE WITH HIGH FREQUENCY ISOLATION GROMMET.
5. CLEARANCE HOLE WITH PERIPHERAL SNUBBING FOR HIGH FREQUENCY ISOLATION.
6. ADJUSTING NUT. INSTALLERS TO LUBRICATE WITH FREEING OIL (WD40).
7. HEXAGONAL COUPLING BAR WITH THREADED HOLE FOR CONNECTION TO DROP ROD.
8. DROP RODS, NUTS AND WASHERS (BY OTHERS)
9. WARNING-OVERSIZE WASHER MUST BE USED AT THIS LOCATION.

FINISH

- PASSIVATED ZINC TO METAL COMPONENTS.
- POLYESTER COATING TO SPRING (COLOUR CODED).
- SUITABLE FOR USE IN NON-CORROSIVE EXTERNAL APPLICATIONS.

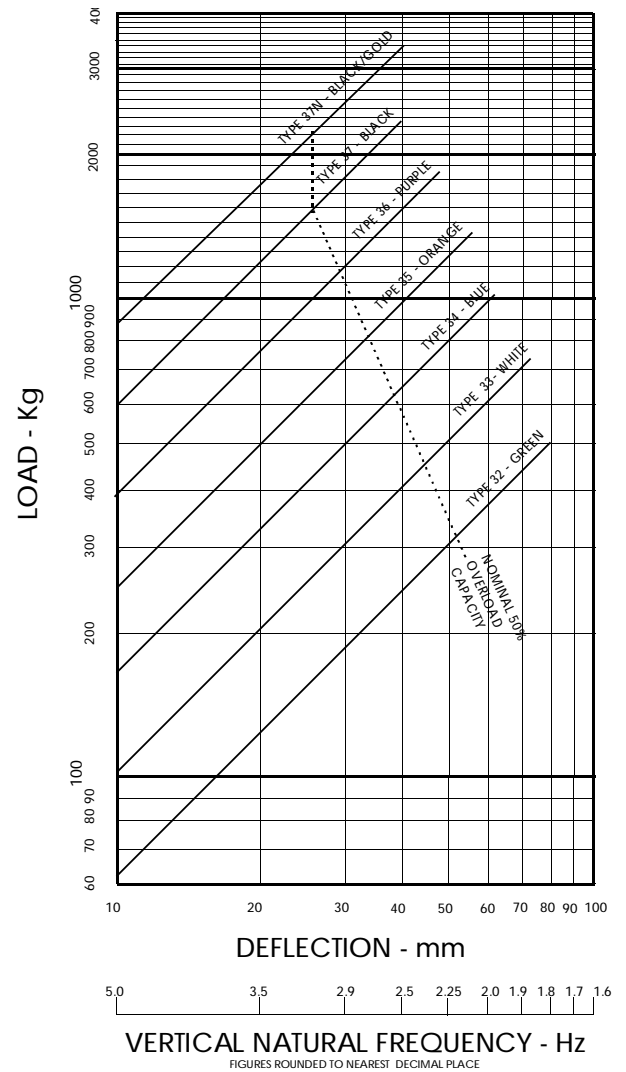
FEATURES

- PRE-LOADED
- HIGH LOAD CAPACITY
- HIGH DEFLECTION
- WELDED STEEL BODY
- CAPTIVE STEEL SPRING
- HIGH FREQUENCY ISOLATION
- ZINC PLATED/POWDER COATED
- COLOUR CODED SPRING



ALLAWAY
ACOUSTICS
LIMITED
www.allawayacoustics.co.uk

LOAD/DEFLECTION GRAPH



NOTES

- THIS DATA SHEET IS TO BE READ IN CONJUNCTION WITH THE EQUIPMENT SCHEDULE.
- THE SPRING WILL BE PRE-LOADED AT WORKS BUT WILL NEED UNLOCKING AND ADJUSTING AFTER INSTALLATION.
- DROP RODS, NUTS, LOCKING NUTS AND WASHERS TO BE SUPPLIED AND FITTED BY OTHERS.

SUFFIX

- H(-)JPL - OPEN SPRING HANGER (MODEL REFERENCE GIVEN ON EQUIPMENT SCHEDULE)
- SP - SPECIAL CONSTRUCTION. SEE EQUIPMENT SCHEDULE FOR DETAILS.