

DATA SHEET V500F SPRING HANGER HPL1 RANGE PRE-LOADED

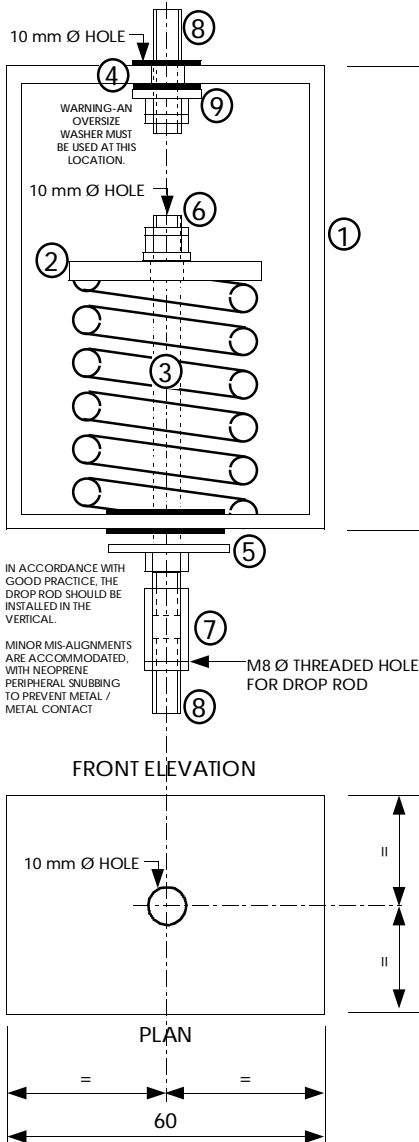
THIS IS NOT A STAND ALONE DOCUMENT AND UNLESS REFERRED TO IN A CERTIFIED EQUIPMENT SCHEDULE IS SUBJECT TO REVISION WITHOUT NOTICE.

CAPACITY

TYPE	COLOUR CODE	LOAD * Kg	DEFLECTION * mm
1	BROWN	52	39
2	GREEN	69	36
3	WHITE	86	32
4	BLUE	119	28
5	ORANGE	150	24

*IMPORTANT : VALUES SHOWN ARE MAXIMUM WITH SPRING IN SOLID CONDITION. RECOMMENDED OVERLOAD CAPACITY IS 50%.

DIMENSIONS



COMPONENTS

1. HEAVY GAUGE, FULLY WELDED STEEL BOX SECTION BODY.
2. TOP PRESSURE PLATE.
3. COLOUR CODED HIGH DEFLECTION STEEL SPRING.
4. DROP ROD HOLE WITH HIGH FREQUENCY ISOLATION GROMMET.
5. CLEARANCE HOLE WITH PERIPHERAL SNUBBING FOR HIGH FREQUENCY ISOLATION.
6. ADJUSTING NUT. INSTALLERS TO LUBRICATE WITH FREEING OIL (WD40)
7. HEXAGONAL COUPLING BAR WITH THREADED HOLE FOR CONNECTION TO DROP ROD.
8. DROP RODS, NUTS AND WASHERS (BY OTHERS)
9. WARNING-OVERSIZE WASHER MUST BE USED AT THIS LOCATION.

FINISH

- PASSIVATED ZINC TO METAL COMPONENTS.
- POLYESTER COATING TO SPRING (COLOUR CODED).
- SUITABLE FOR USE IN NON-CORROSIVE EXTERNAL APPLICATIONS.

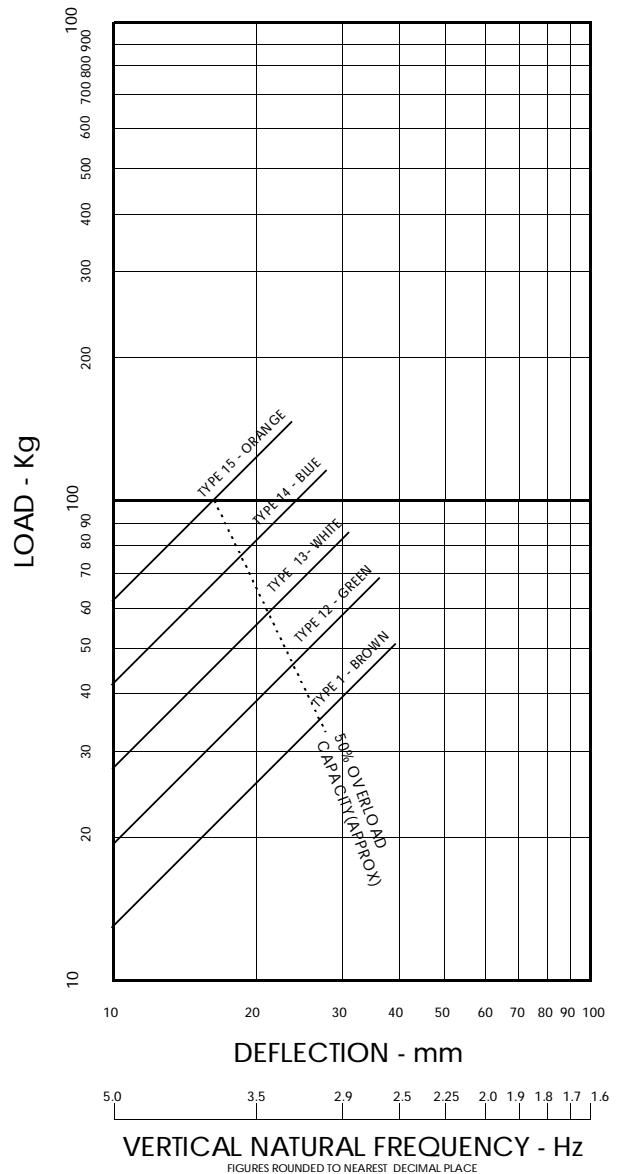
FEATURES

- PRE-LOADED
- HIGH LOAD CAPACITY
- HIGH DEFLECTION
- WELDED STEEL BODY
- CAPTIVE STEEL SPRING
- HIGH FREQUENCY ISOLATION
- ZINC PLATED/POWDER COATED
- COLOUR CODED SPRING



**ALLAWAY
ACOUSTICS
LIMITED**
www.allawayacoustics.co.uk

LOAD/DEFLECTION GRAPH



NOTES

- THIS DATA SHEET IS TO BE READ IN CONJUNCTION WITH THE EQUIPMENT SCHEDULE.
- THE SPRING WILL BE PRE-LOADED AT WORKS BUT WILL NEED UNLOCKING AND ADJUSTING AFTER INSTALLATION.
- DROP RODS, NUTS, LOCKING NUTS AND WASHERS TO BE SUPPLIED AND FITTED BY OTHERS.

SUFFIX

- H(-)PL - OPEN SPRING HANGER (MODEL REFERENCE GIVEN ON EQUIPMENT SCHEDULE)
- SP - SPECIAL CONSTRUCTION. SEE EQUIPMENT SCHEDULE FOR DETAILS