

DATA SHEET V250F

CLS/CL RANGE CONSTANT LEVEL MOUNT

INSTALLATION INSTRUCTIONS

THIS IS NOT A STAND ALONE DOCUMENT AND UNLESS REFERRED TO IN A CERTIFIED EQUIPMENT SCHEDULE IS SUBJECT TO REVISION WITHOUT NOTICE.



ALLAWAY
ACOUSTICS
LIMITED

IMPORTANT NOTES

THE MOUNT SHOULD BE POSITIONED SUCH THAT THE MACHINE FRAME SPANS THE LOAD BEARING SUPPORT POSTS AS PER DIAGRAM BELOW.

PIPES, DUCTS AND CONDUITS MUST NOT BE CONNECTED UNTIL THE MACHINE IS AT THE CORRECT HEIGHT AND IS FLOATING. ESURE THAT NO ADDITIONAL LOAD IS TRANSFERRED TO THE MACHINE DURING INSTALLATION OF SUCH SERVICES.

THE MOUNT MUST BE INSTALLED UPRIGHT, WITH A MINIMUM OF ONE FIXING.

MOUNTINGS MUST BE ADJUSTED A SMALL AMOUNT IN TURN AS ADJUSTING ONE AT A TIME MAY RESULT IN OVERLOAD AND PERMANENT DAMAGE TO THE SPRING.

FREELING OIL (WD40) SHOULD BE USED TO LUBRICATE THE ADJUSTING NUT.

INSTALLATION

1. LOCATE AND SECURE THE MOUNTINGS USING ONE OR MORE OF THE BOLT HOLES PROVIDED.

2. PLACE THE MACHINE ONTO THE LOAD BEARING TOP PLATE (4) AND SECURE AS FOLLOWS:

TYPE CLS HAS A CENTRAL STUD (11) ALLOWING THE MACHINE TO BE LOCATED AND BOLTED DOWN.

TYPE CL HAS NO STUD, ALLOWING THE MACHINE TO BE WELDED OR CLAMPED IN PLACE.

3. LOOSEN THE NUTS ON THE TRANSIT BOLTS (9).

4. TRANSFER THE LOAD TO THE SPRING BY TURNING ADJUSTING NUT (6) CLOCKWISE UNTIL LOAD BEARING PLATE (4) LIFTS CLEAR OF LOAD BEARING SUPPORTS (1).

5. TIGHTEN LOCK NUT (7) WHEN MACHINE IS FLOATING FREELY AND LEVEL.

6. ADJUST AND LOCK THE TRANSIT BOLT NUTS (9) SUCH THAT THERE IS A 5 mm GAP BETWEEN THE WASHER AND GROMMET (5).

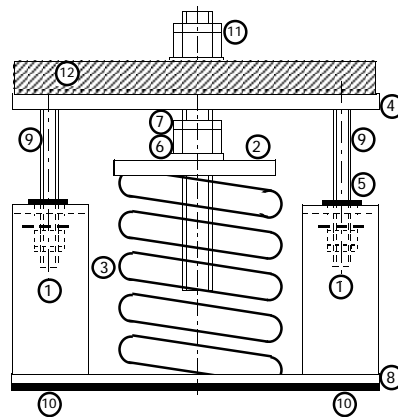
FINISH

METAL COMPONENTS ARE ZINC PLATED AND THE SPRING POLYESTER COATED.

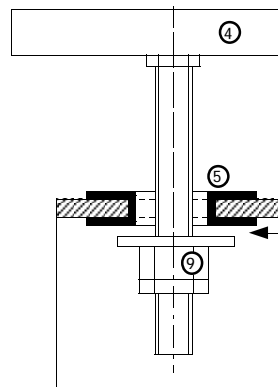
THE MOUNTING IS SUITABLE FOR USE IN NON-CORROSIVE EXTERNAL APPLICATIONS.

ADDITIONAL PAINTING OR OTHER TREATMENTS DICTATED BY THE ACTUAL SITE CONDITIONS ARE TO BE APPLIED BY OTHERS.

COMPONENTS



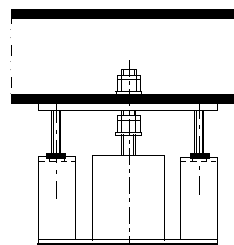
1. LOAD BEARING SUPPORTS.
2. SPRING PRESSURE PLATE.
3. STEEL SPRING.
4. LOAD BEARING TOP PLATE.
5. CLEARANCE HOLE WITH PERIPHERAL SNUBBING.
6. ADJUSTING NUT.
7. LOCKING NUT.
8. ISOLATION PAD.
9. TRANSIT BOLTS.
10. HOLDING DOWN BOLT HOLES.
11. PLANT HOLDING DOWN STUD (MODEL CLS ONLY)
12. MACHINE FRAME (OTHERS)



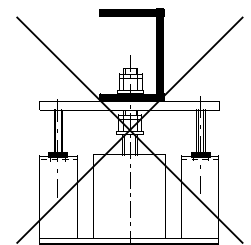
WHEN MOUNT IS FULLY ADJUSTED, LOCATE THE TRANSIT BOLT NUTS SO THAT THE GAP BETWEEN THE WASHER AND GROMMET IS APPROX 5 mm.

THERE SHOULD BE MINIMAL CONTACT BETWEEN BOLT AND GROMMET.

MACHINE FRAME ORIENTATION



CORRECT



IN-CORRECT