

# DATA SHEET V130F

## SPRING MOUNT

### M30 RANGE

#### OPEN COIL

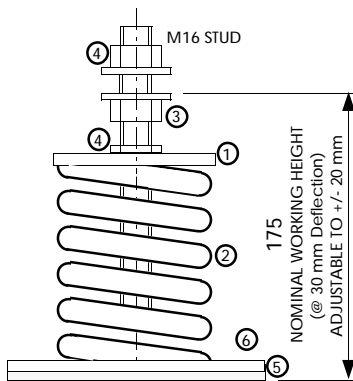
THIS IS NOT A STAND ALONE DOCUMENT AND UNLESS REFERRED TO IN A CERTIFIED EQUIPMENT SCHEDULE IS SUBJECT TO REVISION WITHOUT NOTICE.

### CAPACITY

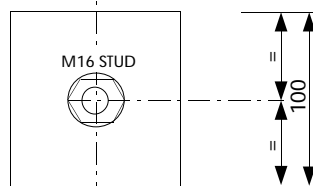
TYPE	COLOUR CODE	LOAD * Kg	DEFLECTION * mm
32	GREEN	503	79
33	WHITE	743	73
34	BLUE	1002	62
35	ORANGE	1420	54
36	PURPLE	1865	47
37	BLACK	2356	40
37N	BLACK/GOLD	3440	40

\*IMPORTANT : VALUES SHOWN ARE MAXIMUM WITH SPRING IN SOLID CONDITION. RECOMMENDED OVERLOAD CAPACITY IS 50%.

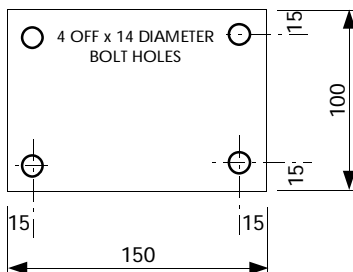
### DIMENSIONS



ELEVATION



PRESSURE PLATE



BASE PLATE

### COMPONENTS

1. SPRING PRESSURE PLATE.
2. COLOUR CODED HIGH DEFLECTION STEEL SPRING (TYPE N HAS NESTED SPRING).
3. ADJUSTING NUT. INSTALLERS TO LUBRICATE WITH FREEING OIL (WD40)
4. LOCKING NUT.
5. HIGH FREQUENCY ISOLATION PAD.
6. 14 mm HOLDING DOWN BOLT HOLES.

### FINISH

PASSIVATED ZINC PLATING TO METAL COMPONENTS.

POLYESTER COATING TO SPRING (COLOUR CODED).

SUITABLE FOR USE IN NON-CORROSIVE EXTERNAL APPLICATIONS.

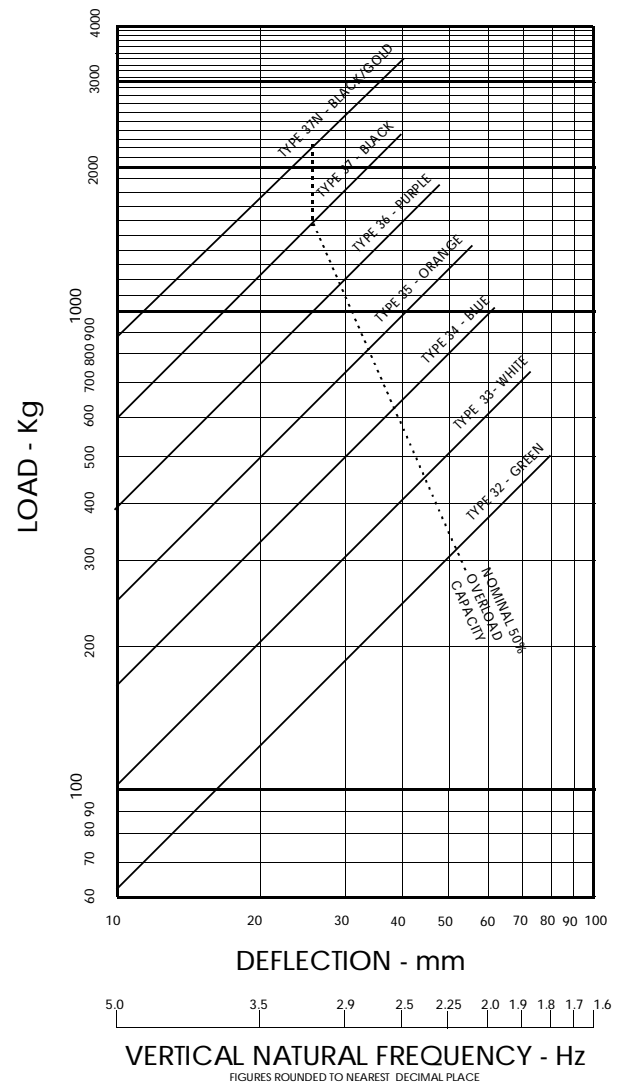
### FEATURES

- OPEN COIL
- HIGH LOAD CAPACITY
- HIGH DEFLECTION
- ALL STEEL CONSTRUCTION
- HIGH FREQUENCY ISOLATION
- ZINC PLATED COMPONENTS
- POWDER COATED SPRING
- COLOUR CODED



**ALLAWAY**  
**ACOUSTICS**  
LIMITED  
www.allawayacoustics.co.uk

### LOAD/DEFLECTION GRAPH



### NOTES

THIS DATA SHEET IS TO BE READ IN CONJUNCTION WITH THE EQUIPMENT SCHEDULE.

THE SPRING WILL NEED ADJUSTING AFTER INSTALLATION.

HOLDING DOWN BOLTS TO BE SUPPLIED AND FITTED BY OTHERS.

SUITABLE FOR USE IN NON-CORROSIVE EXTERNAL APPLICATIONS.

### SUFFIX

M(-) - OPEN COIL SPRING MOUNT

SP - SPECIAL CONSTRUCTION. SEE EQUIPMENT SCHEDULE FOR DETAILS